

Surrender Report
For the period 28/11/2023 to 23/07/2024

EL 6287 Peterborough

SA Exploration Pty Ltd

By Wade Bollenhagen
24/07/2024

Table of Contents

Contents

Bibliographic Data 3

SUMMARY 4

1 Introduction 5

2 Tenure..... 5

3 Geology 6

4 Work Completed 6

 4.1 Geological Reviews 6

 4.2 Rock chip sampling 6

5 Environment..... 6

Bibliographic Data

Report Title	Surrender Report for Exploration License 6287 'Peterborough' for the period 28 th November 2022 to 23 rd July 2024.
Project Name	Peterborough
Tenement Number	EL 6287
Tenement Holder	SA Exploration Pty Ltd
Operator	SA Exploration Pty Ltd
Commodities	Cu, Au
Tectonic Unit	Adelaide Geo-syncline
Stratigraphic Units	
1:250,000 Map Sheet	SI 54-5 Burra, SI 54-1 Orroroo
1:100,000 Map Sheets	6631, Jamestown, 6731 - Caroona, 6632 - Orroroo, 6732 - Paratoo
Keywords	Intrusion related Copper & Gold

SUMMARY

Exploration Licence 6287 (Peterborough), held by SA Exploration Pty Ltd (iTech) is located on the eastern Adelaide Fold Belt, North of Burra on the margin of the Murray Basin.

The tenement had no work undertaken on it during the reporting period.

A review as a part of regional kimberlite potential was undertaken.

Exploration Index Map

1 Introduction

EL 6287 (Peterborough) is located around the town of Peterborough in South Australia, (Figure 1). Access is gained by main road 70km North of Burra then by using local dirt roads.

This report details exploration work completed by SA Exploration Ltd between 28th November 2022 and 23rd July 2024.

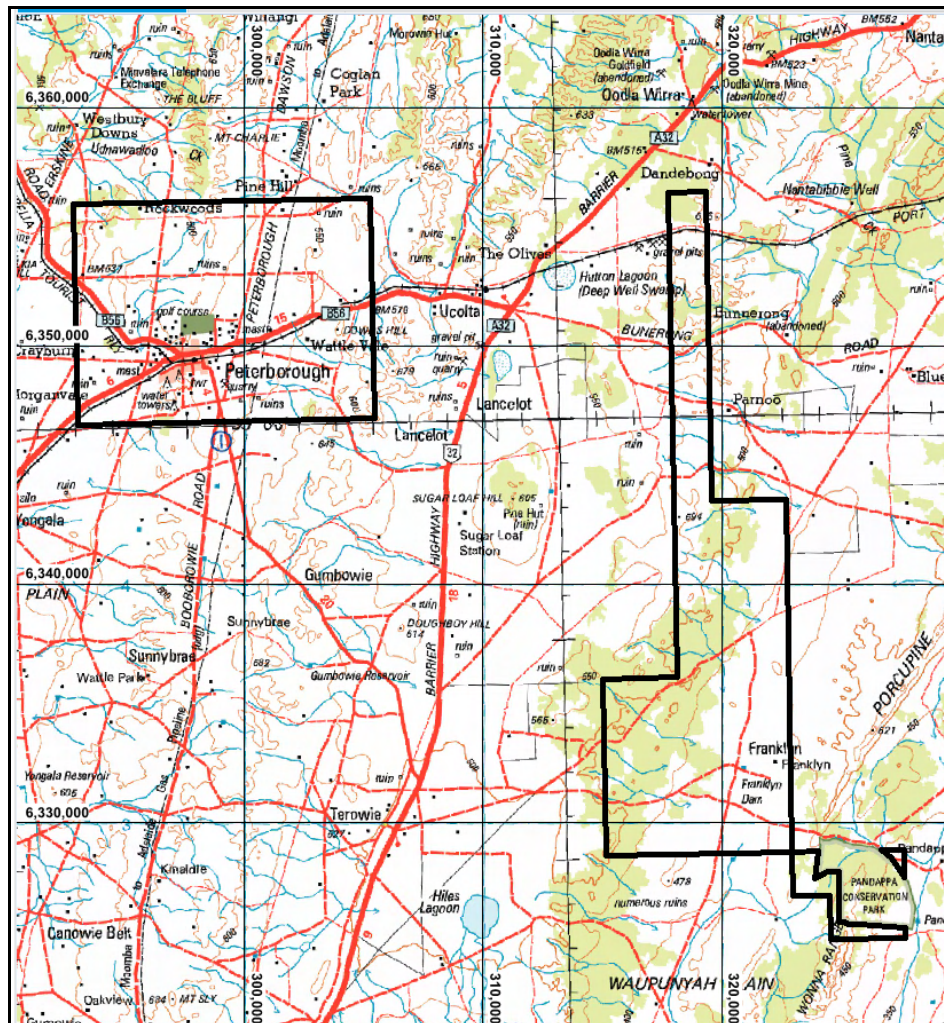


Figure 1: Location Map EL 6287.

Previous exploration activities have been limited.

2 Tenure

EL 6287 'Peterborough' covering 233km² was granted to SA Exploration Pty Ltd (a wholly owned subsidiary of iTech Minerals Ltd) on 28th November 2018 for a term of 5 years. Renewal was made 3rd October 2023, a Form 14 was submitted on the 7th August 2023 to fulfill the lack of expenditure penalty related to the AEA that covered this tenement.

3 Geology

EL 6287 'Peterborough' lies in the Adelaide Fold Belt, it is dominated by Neoproterozoic rocks, figure 2 (below). The presence of the dolomite within fold structures gives encouragement for the focusing of mineralised fluids. NW-SE structures a thought to be controlling plumbing for fluids generated by intrusions.

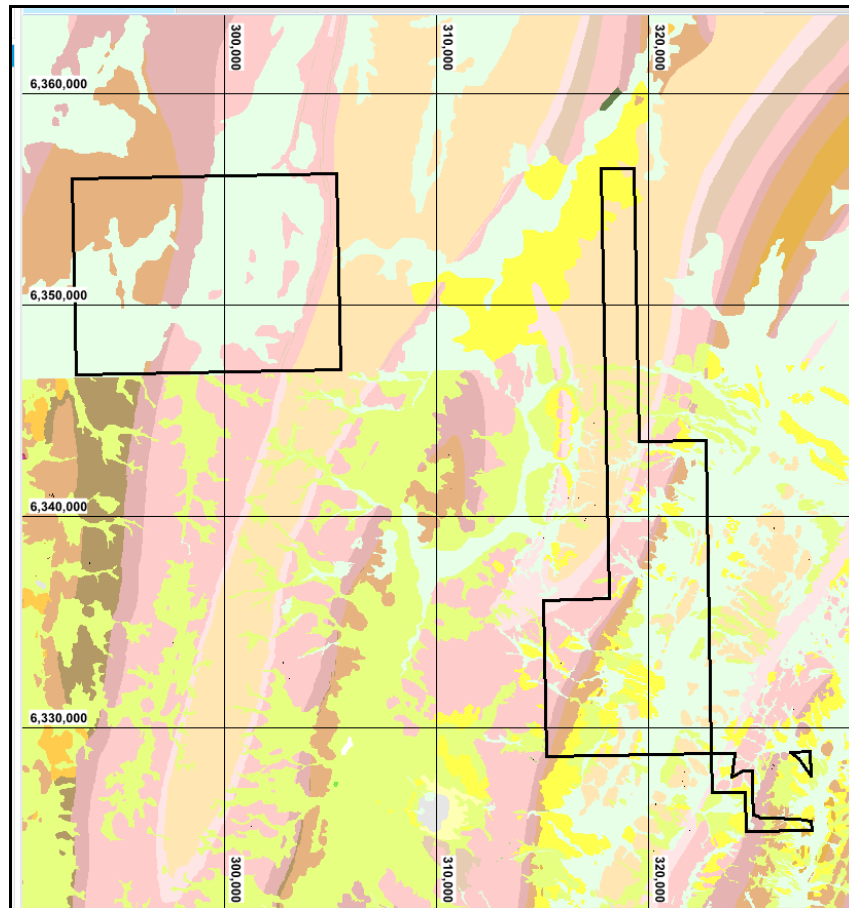


Figure 3: Geology Map for EL6287 (PIRSA)

4 Work Completed

4.1 Geological Reviews

No work was undertaken on the ground in the reporting period.

4.2 Rock chip sampling

None undertaken.

5 Environment

No ground disturbing activities were undertaken..